

# Connected Infrastructure- The Future of Cities



# Peachtree Corners, GA



Build a home for high-tech companies and create a place where people could live, work and play.

Industry giants such as Hayes Microcomputer, and Scientific Atlanta were among the first companies to make 500 acre Tech Park their headquarters, and General Electric expanded their presence in the area.

Technology companies attracted engineers and high- paying professional careers to Peachtree Corners.

**TECH PARK IS HOME TO SOME OF THE  
WORLD'S MOST DISRUPTIVE TECHNOLOGY  
COMPANIES AND FORTUNE 500**

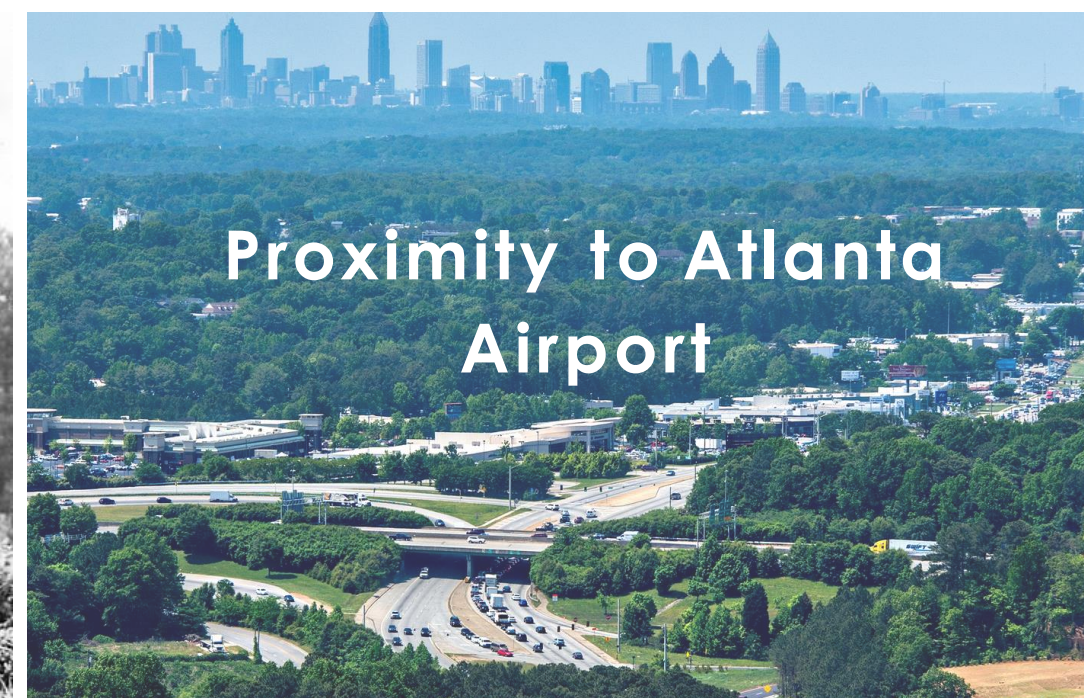
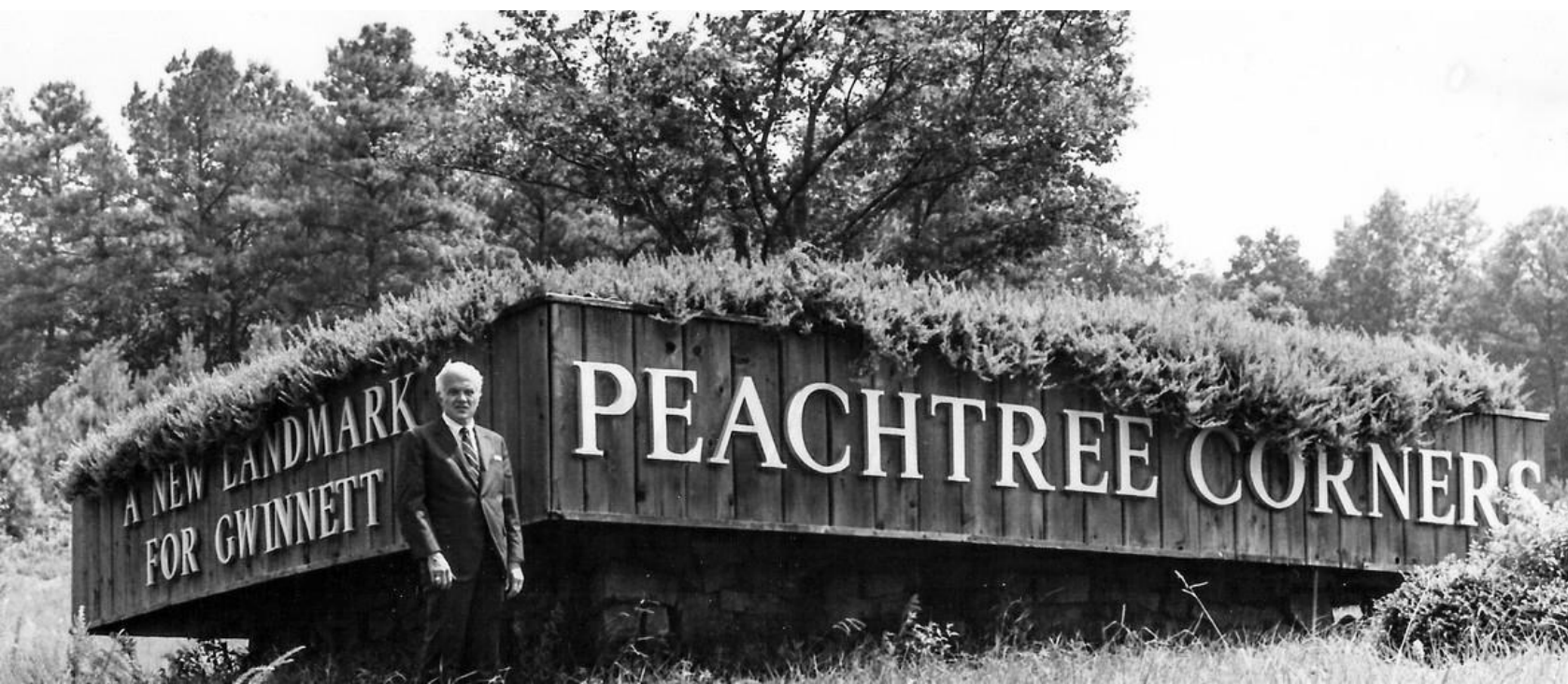
**T Mobile™**

**SIEMENS**



  
**Crawford**

**Honeywell**



**Proximity to Atlanta  
Airport**





# A Bold Step Into the Future

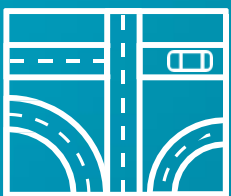
**How can we use public infrastructure?**

**How can we compete with other municipalities?**

**How to capitalize on Georgia's first Technology Park?**



# WHO ARE WE?



**City Street of the Future**  
State-of-the-art smartcity infrastructure



**3-Mile Public Autonomous Test Track**  
(4.82 kilometers)



**Mobility Test Platform**  
Connected Infrastructure / V2X Test Platform



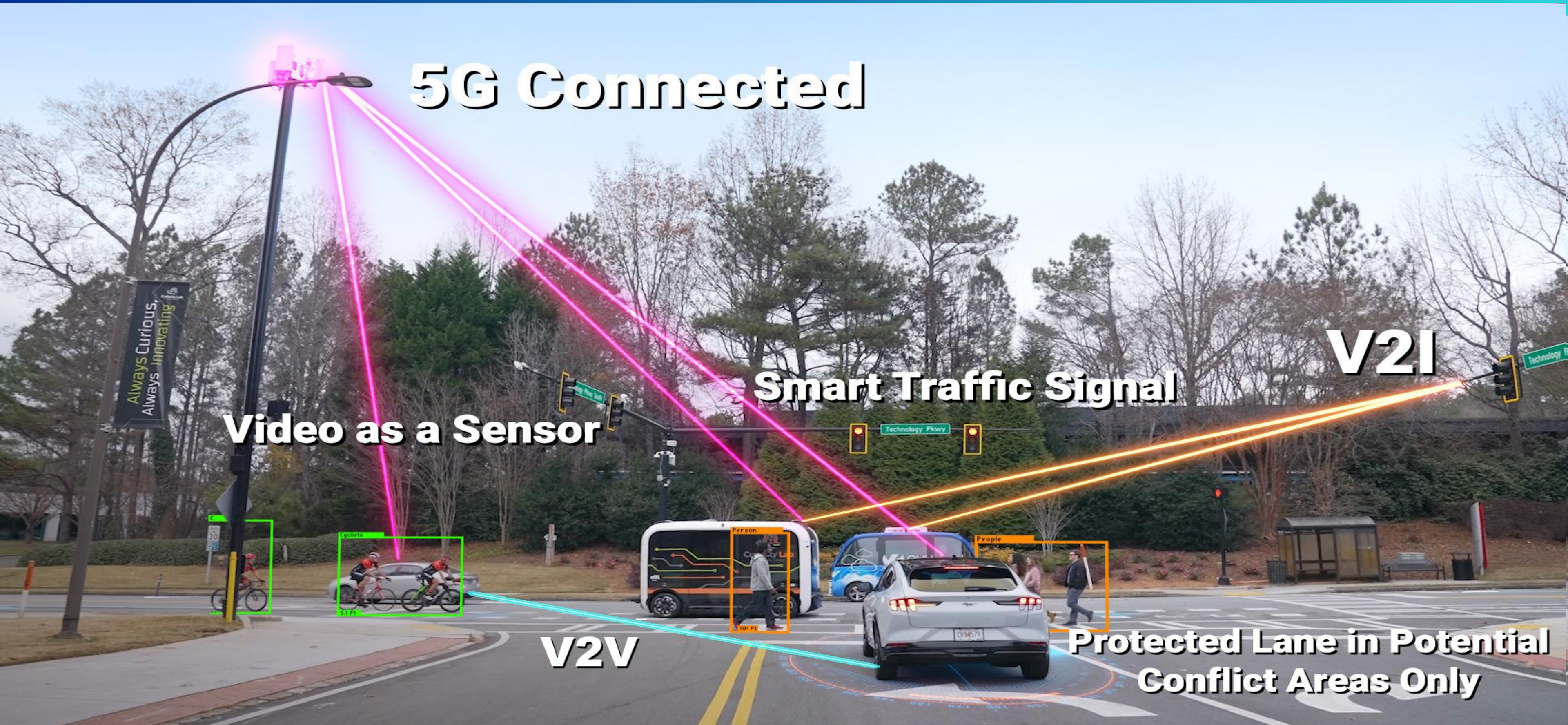
**Innovation Center**  
25,000 square feet of space that is home of some of the most innovative companies





# A Model for the "City Street of the Future"

The nation's FIRST smart city powered by real world infrastructure + next generation connectivity





# AUTONOMOUS/ADVANCED VEHICLE TEST TRACK

Integrated public roadway

- Mature tree canopy
- 13% grade change

Sweeping curves

- Multi-story commercial and residential buildings





# MOBILITY TEST VEHICLE.

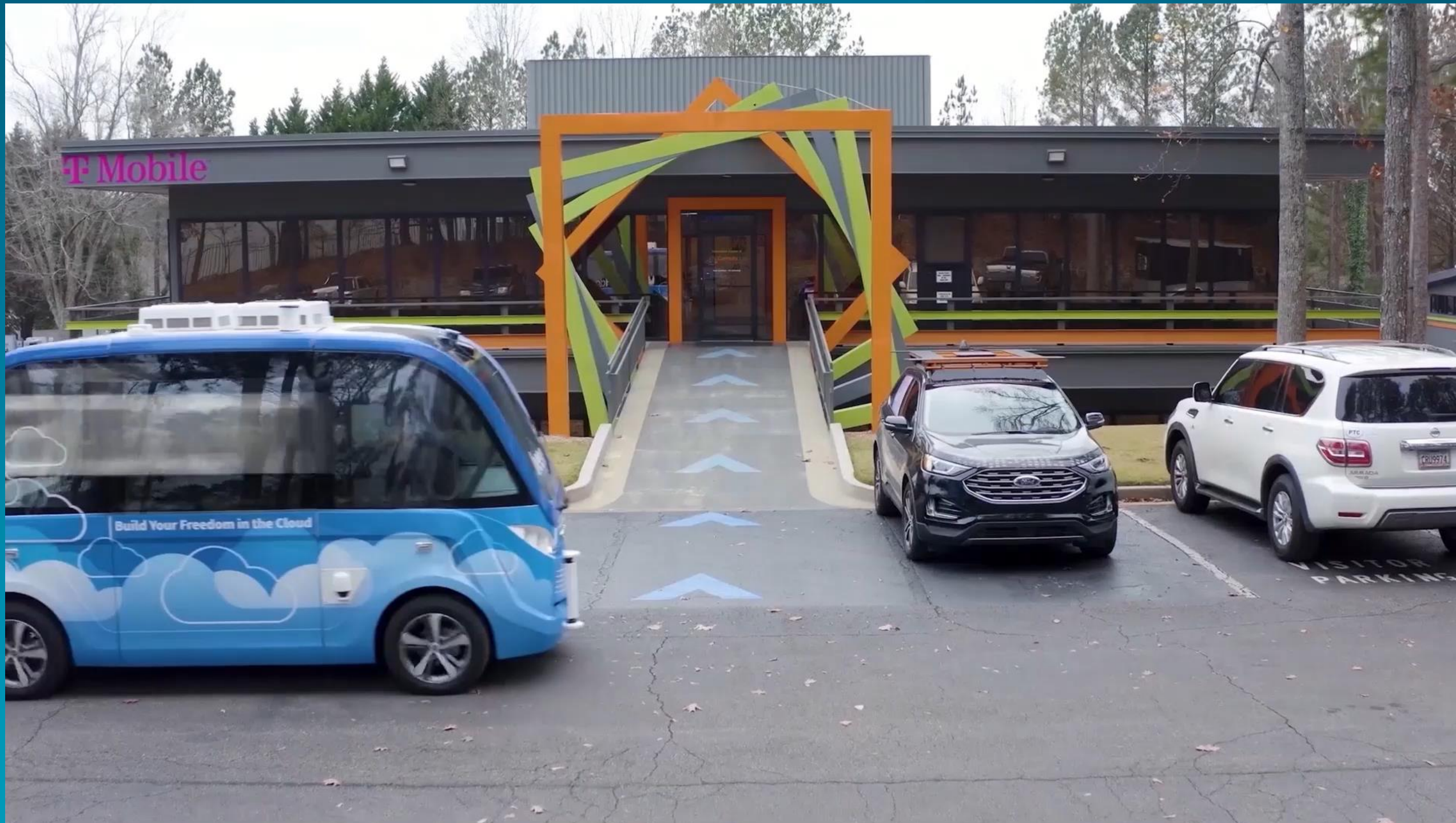
Open-source platform with historical data for collection unlike anywhere else in the nation





# ALWAYS ADVANCING.

Innovation Center



- Technology Incubator for growing & scaling early-stage startups
- Corporate Innovation Space
- 25,000 square feet of flexible space



# ALWAYS DRIVING. ALWAYS SOARING.

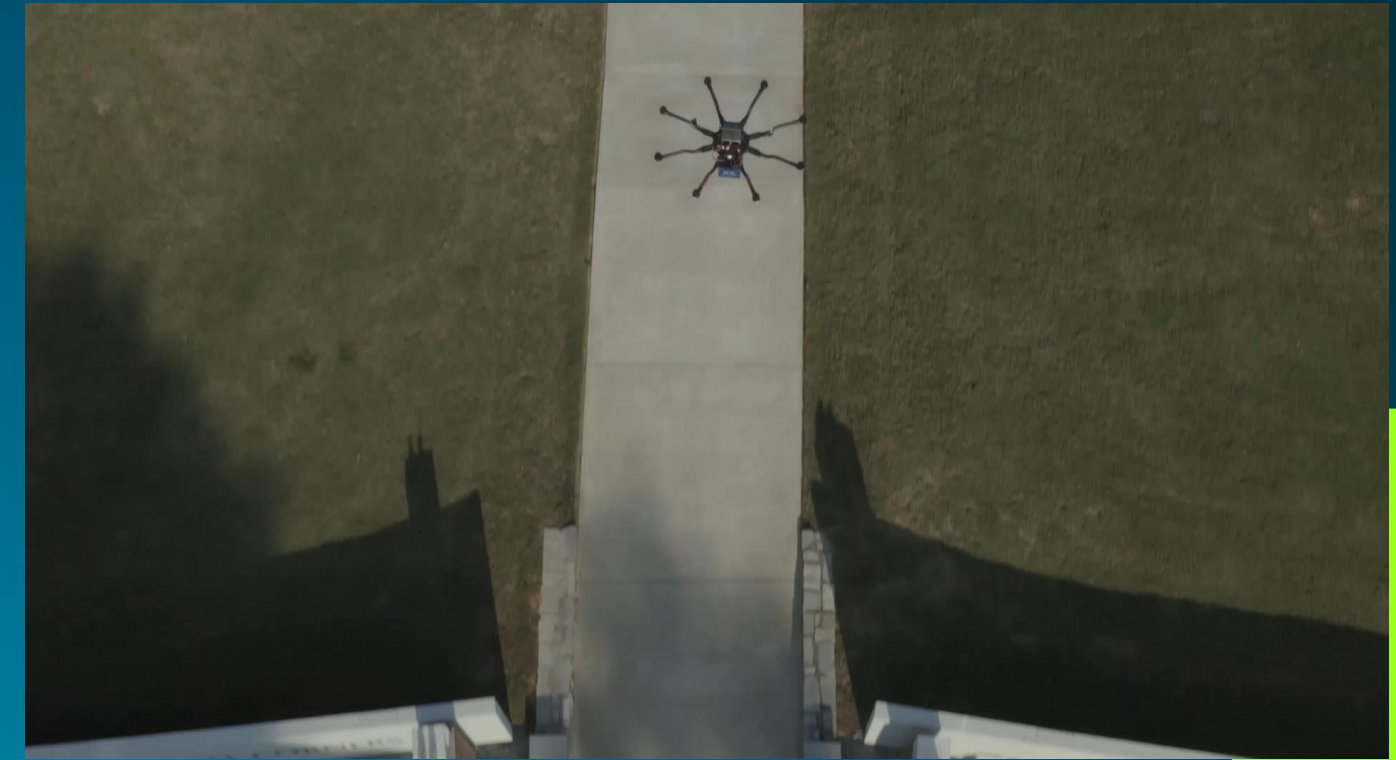


## Teleoperated Testing

Real world integration of docking operations



Autonomous drone delivery technologies



Teleoperated E-scooter as a service



Long flight automated battery swap



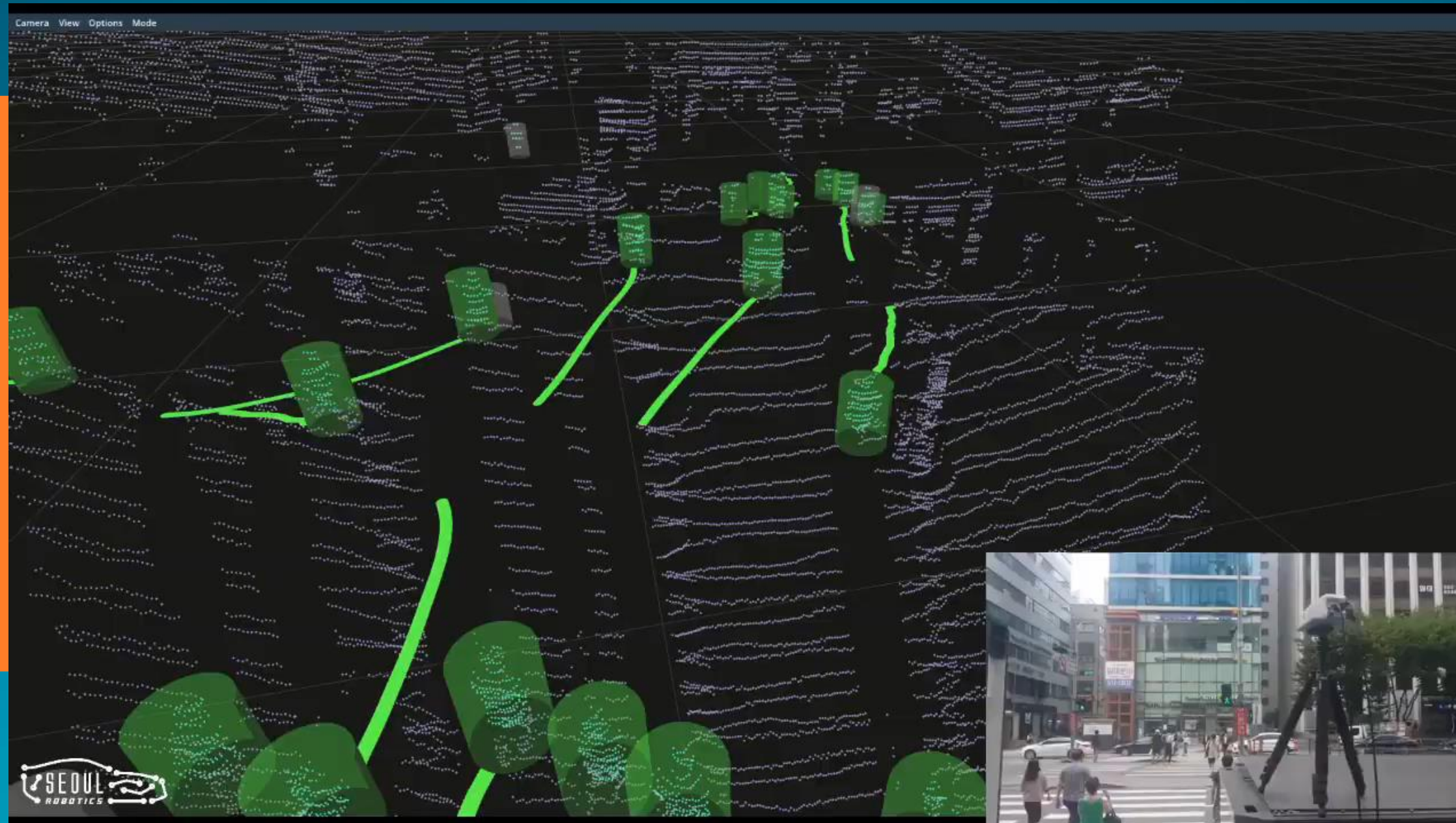


# ALWAYS LEADING.

Moving Smart City technology forward

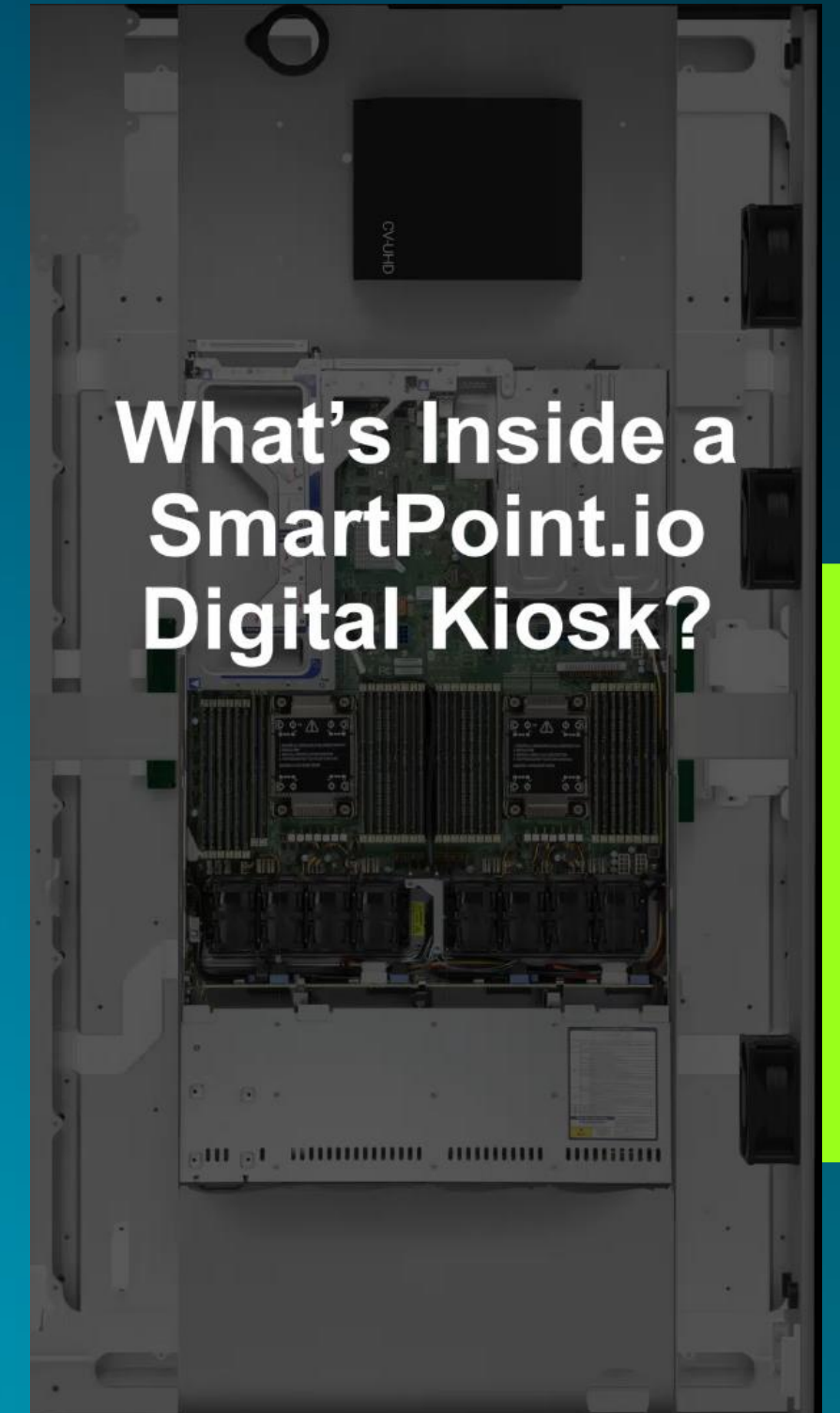


Computer vision software that uses state-of-the-art deep learning to create highly accurate 3D models of the world real time.



Data centers on the sidewalk – digital infrastructure that enables next-gen applications on the network edge.

**What's Inside a  
SmartPoint.io  
Digital Kiosk?**





# Connecting the Unconnected

## Pedestrian Crosswalks





# VRU Safety

Protecting our most vulnerable

Vulnerable Road Users

# VRU

Over **11,000** deaths  
in the United States



# The Complete Intersection

Protecting all road users

**C-V2X**

10x/second direct communication  
between cars and VRUs





# UNLIKE ANY OTHER SMART CITY ENVIRONMENT ON EARTH.

- Live 5G wireless environment
- City government owns all infrastructure: quick approvals and decisions
- No charge for the use of the ecosystem / infrastructure
- No intellectual property rights required
- Respect and guarantee of security for proprietary data
- Highest level of data security protection for unclassified data



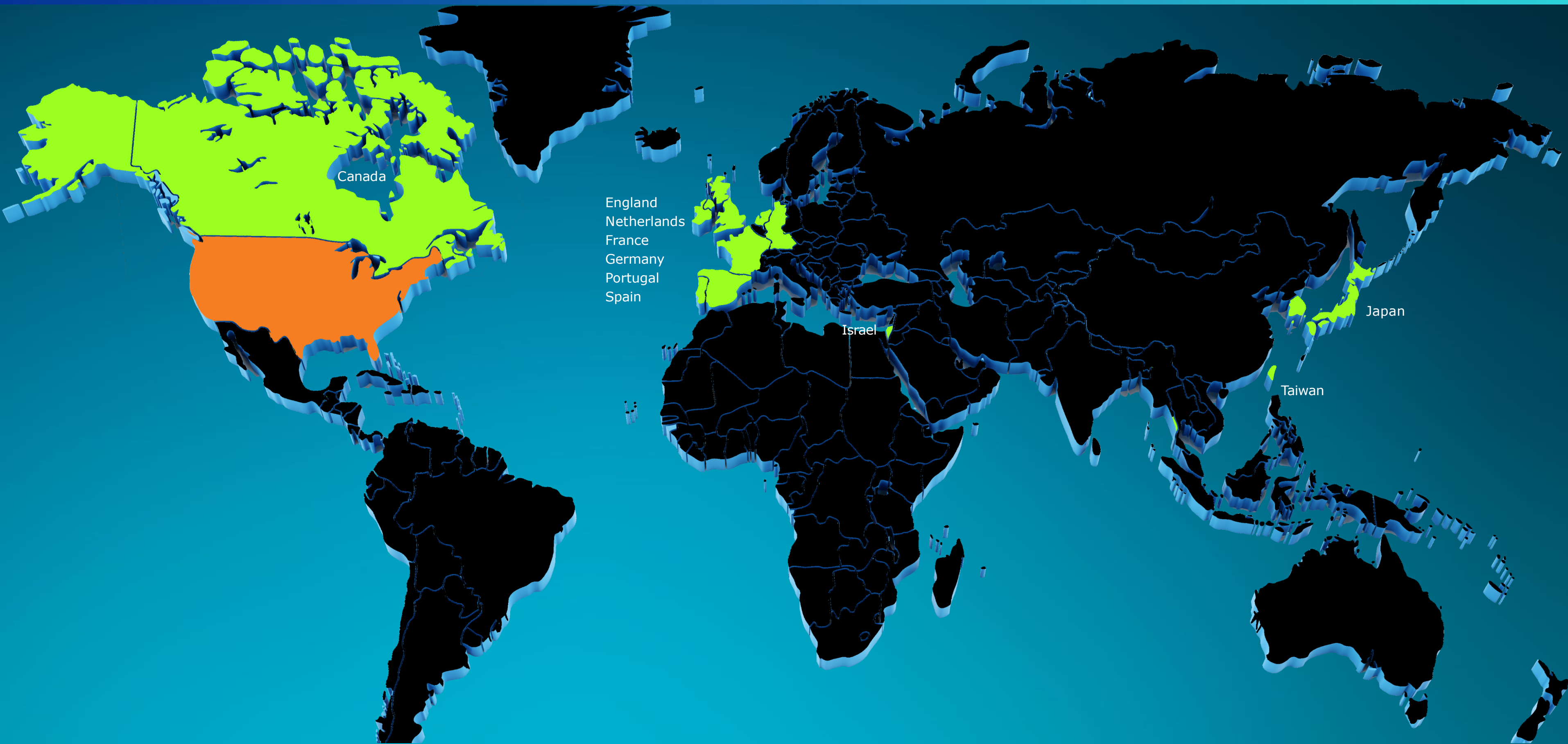


# PARTNERS





# INTERNATIONAL PARTNERSHIPS & COLLABORATIONS







# Curiosity Lab

at Peachtree Corners

